

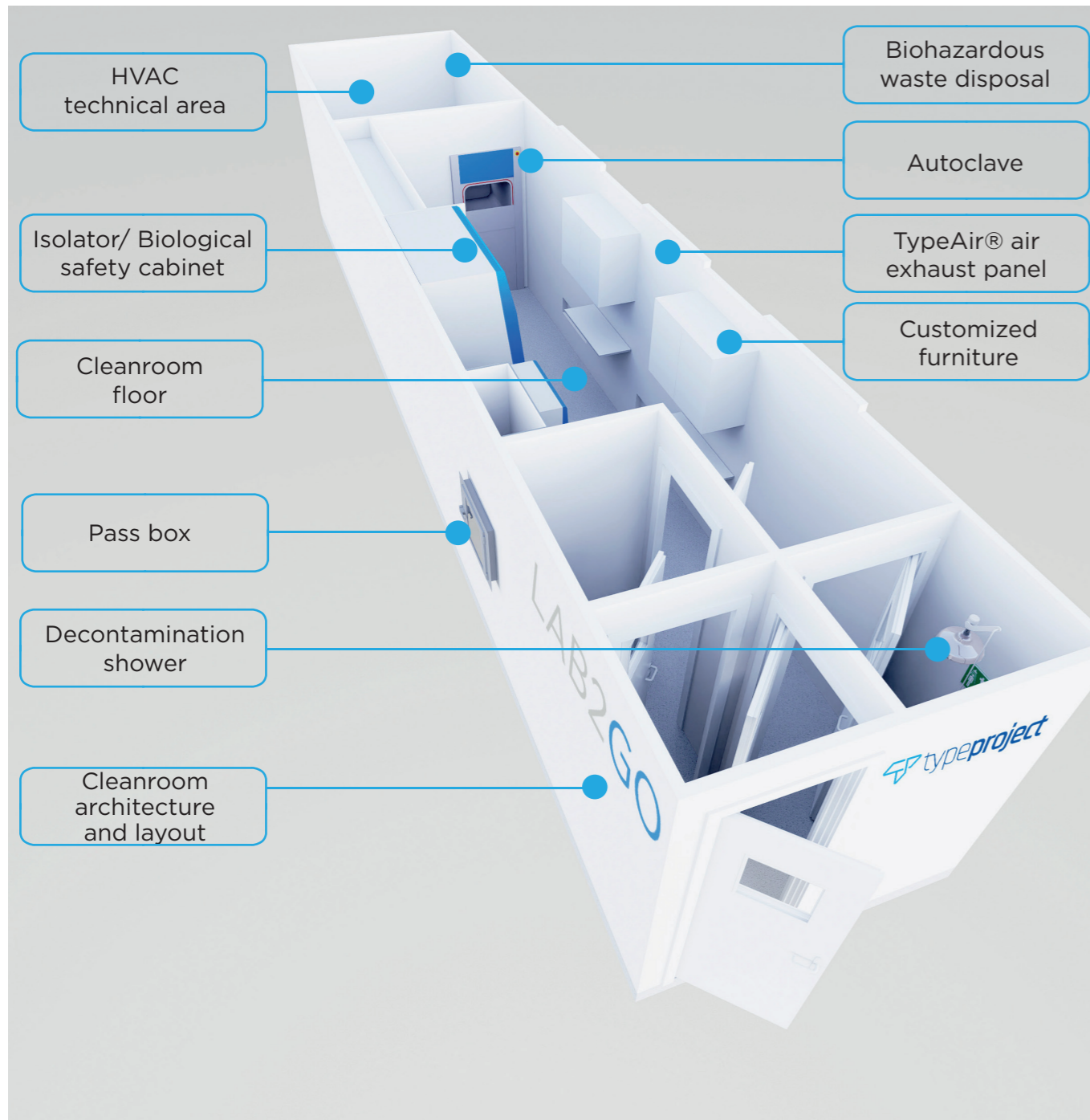
LAB2GO



Innovative Lab Concept



Anytime,
Anywhere,
Any Application



Anytime,
Anywhere,
Any Application

Innovative Laboratory Concept

WHY LAB2GO ?

- 1 TURNKEY**
 Plug and play solution, fully equipped, with worldwide technical support and maintenance
- 2 PORTABLE AND MOBILE**
 Fast and flexible deployment, quick access to remote locations
- 3 MULTIPLE APPLICATIONS**
 Engineered to your present requirements and future needs
- 4 MODULAR INTELLIGENT SYSTEM**
 Quick assembly time, easily changeable layout and facility expansion when needed
- 5 REGULATORY COMPLIANCE**
 Designed in compliance with current regulations and international guidelines



LAB2GO applications:

- Hospital Pharmacy;
- Pharmaceutical Manufacturing;
- Quality Control;
- Research and Development;
- Biosafety;
- Public health (Food, Water, Infectious Diseases);
- Military Health Care in Disaster and Rescue Zones;
- Safety and Security;
- Others;

LAB2GO FEATURES

Shipping containers, ISO 40' High Cube, are starting to be widely used to support laboratory equipment and health care temporary workstations. These containers offer high durability and ability to handle extreme outdoor conditions. Additionally they are a cost-effective solution for implementation of ready to operate laboratories.

Our portable and mobile labs can be shipped to any part of the globe due to the easy transportability of the ISO shipping container. These type of containers are suitable for multiple transportation methods such as truck, trailer or ship.

In case more space is needed, LAB2GO offers the possibility of facility extension through attachment of complementary units. The exterior walls can be finished with materials like wood and metal, for a more appealing appearance while easily blending with the surroundings.

Unit dimensions:

Overall (LxWxH): 12,20m x 2,44m x 2,90m

Internal (LxWxH): 12,03m x 2,35m x 2,70m

LAB2GO laboratory features:

- Adjustable layout for multiple configurations to better suit client's needs;
- Designed according to ISO 14644-1/4 (Cleanrooms and Associated Controlled Environments), EU GMP (Good Manufacturing Practice) and ISO 17025 (General Requirements for the Competence of Testing and Calibration Laboratories);*
- In compliance with WHO biosafety guidelines (if applicable)
- Energy efficiency according to ISO 14644-16;
- Advanced HVAC system, including TypeAir® air extraction panels integrated in the cleanroom walls, which promote maximum use of lab space and a more efficient airflow distribution;
- Type Project furniture manufactured with lab grade materials and structurally reinforced workstations, designed according to EN 13150:2001 (Workbenches for Laboratories — Dimensions, Safety Requirements and Test Methods);
- Fully integrated laboratory equipment according to the application;
- Computer for data saving, analysis assessment and monitorization of the environment and equipment inside the unit;
- Prepared to be attached to other LAB2GO units;
- Operators training and support through audio-visual content accessible at any time;
- Overseas preventive maintenance.

* Factory Acceptance Test (FAT) certification by accredited laboratory, in compliance with ISO 17025.

LAB2GO units



LAB2GO FEATURES



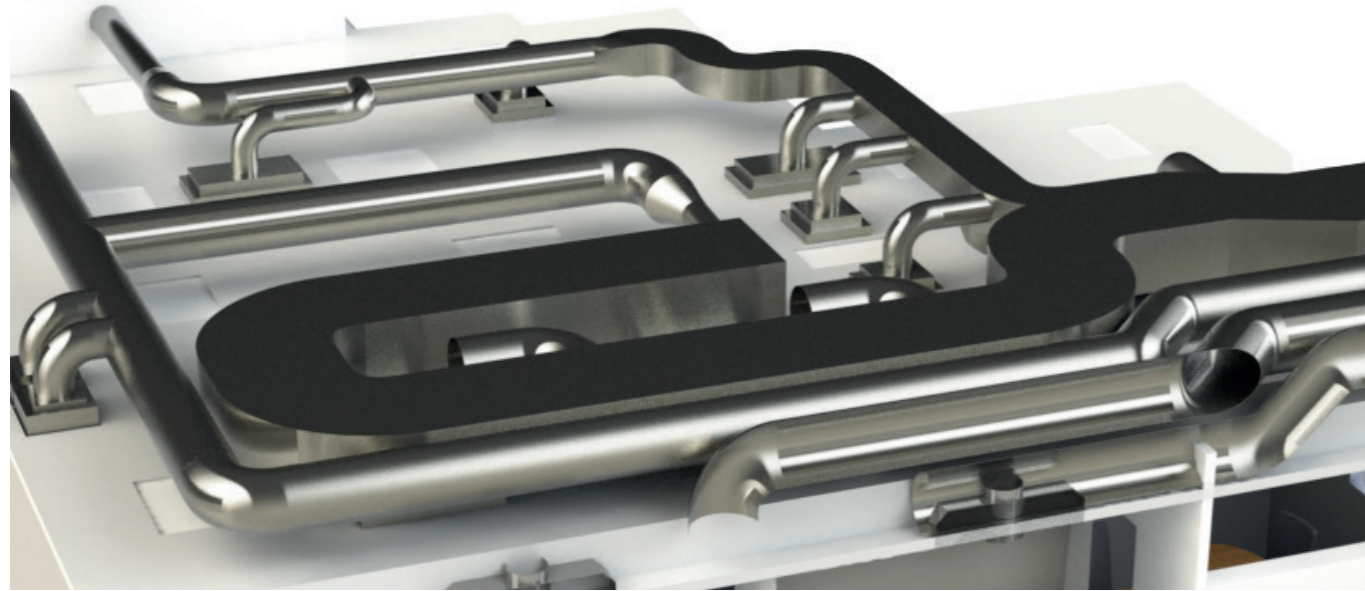
LAB2GO elements such as ceiling panels, wall panels, floor, windows, and light fixtures were specifically selected to provide smooth surfaces, reduce accumulation of particles inside the room and promote easy cleaning and disinfection procedures. The cleanroom walls, due to their modular design, can also be easily modified and panels individually replaced.

To meet the most strict regulations, we carefully selected the following components:

- Discontinuous vertical and ceiling panel smooth, durable and easily cleaned;
- Cleanroom doors with two-faceted glass (optional);
- PET coating on panels and doors, for material protection of hydrogen peroxide (H₂O₂);
- Doors interlocking system, traffic lights and emergency buttons;
- Sanitary profile for vertical, ceiling, floor and outside corners, properly sealed with silicone;
- Decontamination/emergency shower with eyewash station (when applicable);
- Dynamic or static pass box in stainless steel with electric interlock, for the materials passage from the outside to the inside of the container, for segregation of materials and personnel flow;
- Eletrical installation with monophase/triphase general and dedicated sockets, switches for illumination circuits and general switchboard;
- High performance, homogeneous and easily cleaned vinyl flooring;
- Barrier-type decontamination systems, like double door autoclaves or washing machines, are mandatory for a higher safety level as it further reduces the proliferation of potentially dangerous microorganisms.



CENTRALIZED HVAC SYSTEM



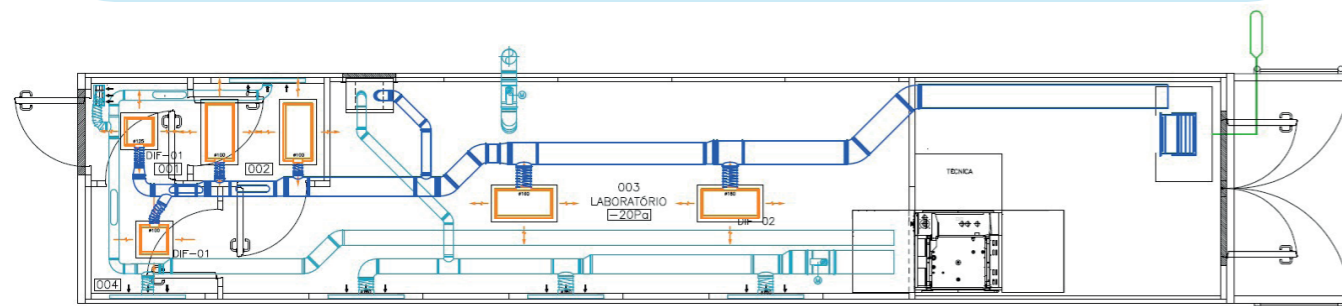
The cleanroom design has been carefully studied and projected by the engineering team, to ensure that samples can be handled without risk of contaminating the environment, the operators or samples.

LAB2GO was designed in compliance with ISO 14644-1 and with a particular focus on personnel safety and reduction of cross contamination levels through the use of a specific air filter system with air pressure differentials and air renovation reduction per hour according to the application.

The air inlet was projected to be carried out along the false ceiling, while the air extraction was designed to be carried out by TypeAir® panels.

HVAC main components:

- Air handling unit suitable for indoor and outdoor use. This equipment with enclosure is protected by a weather-resistant polyester paint with high protection against UV rays, being prepared for extreme outdoor conditions;
- Centrifugal fan for extraction, with remote control and filtration;
- Duct network built in galvanized sheet with a rectangular or circular profile: insufflated for distribution of treated air and not insulated for air return;
- Air inlet diffusers frame in full thermo-lacquer;
- TypeAir® air exhaust panels or column with return at a low level;
- Pressure gauges that allow visualization of air pressure differential measurements between rooms;
- Electrical installation (power and control) associated with HVAC;
- Duct integrated flow damper and valves for control of pressure balance.

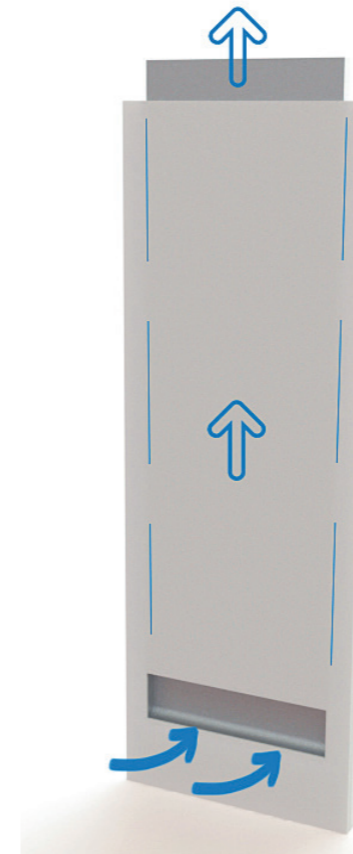


TypeAir®



Air return columns are commonly used in cleanrooms for air exhaust. These take up a lot of functional space in the cleanroom and ends up increasing the number of nooks.

In order to solve this problem, Type Project developed a cleanroom vertical panel with a extraction/return duct incorporated in its core, called TypeAir®.



Advantages of TypeAir® panel includes:

- Increase use of workspace by reducing the volume of space occupied by columns;
- Better placement of the extraction ducts in the facility;
- Provides a more homogeneous extraction flow of the air leading to a more effective removal of particles inside the cleanroom;
- Promotes a more aesthetic environment.

Intelligent TypeAir® 4.0 system

A higher energetic efficiency can be achieved by the HVAC energy saving system that can be integrated as a customized project at demand. This system consists of an airflow controlled by a GTC software that adjust, continuously, the air changes according to data generated by equipment sensitive to environment movements/alterations in the room. We can achieve an homogeneous exhaust air behavior by the use of TypeAir® panels in the walls.

SAMPLE AND PERSONNEL FLOW

LAB2GO facilities are designed to reinforce all safety measures so that the operator and the environment are effectively protected. Higher protection can be achieved by two main design layout features: First by separating the entrance and exit areas (entry and exit airlock) and second, by physical separation between samples and personnel flow areas, therefore avoiding cross-contaminations.

In the exit airlock was considered a decontamination or emergency shower when required to promote personnel and environment protection, as recommended by the World Health Organization (W.H.O.) guidelines and GMPs principles.

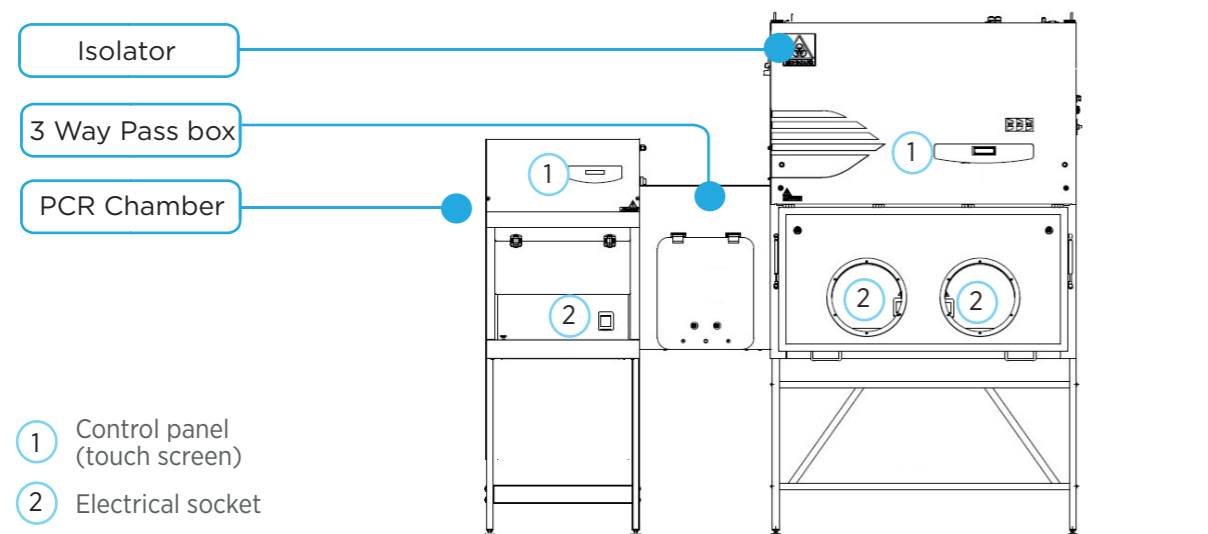
Example of personnel flow:



The Isolator and the pass box can be air pressurized and decontaminated with UV light, allowing not only a complete separation between the operator and the sample, but also the possibility to perform the entire procedure without the need of segregated rooms. Additionally, the use of isolator technology increases energy saving by allowing manipulation of samples in a ISO 8 environment instead of ISO 5/6.

Entry of samples from the exterior of the container to the lab's interior, is designed to be performed through a dynamic pass box, while personnel must enter through an reception room airlock followed by an entry airlock.

Example of sample flow:



TYPE PROJECT FURNITURE



All furniture was carefully designed to be ergonomic, highly resistant to chemicals and easy to clean

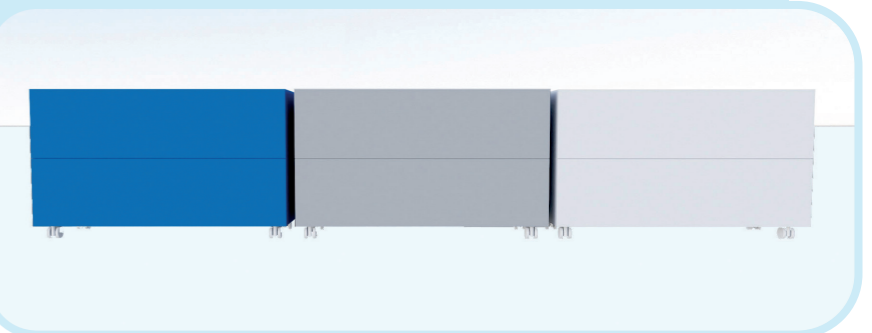
Driven by the need of suitable furniture for critical applications, Type Project designed customized furniture with materials specially adapted to the application requirements and procedures. Integrated in your LAB2GO, this furniture gives customers a space led by security and modernity.

Workbenches reinforced legs and fixation system allows support of heavy equipment and transportation of the mobile lab, without damaging the furniture. Our worktops are composed of high-density fibers and highly chemical resistant material.

We offer a wide range of suitable materials, depending on the application, including stainless steel AISI 304/316, postforming or others.



Optional finishes and other adjustments on demand



STANDARD LAB2GO



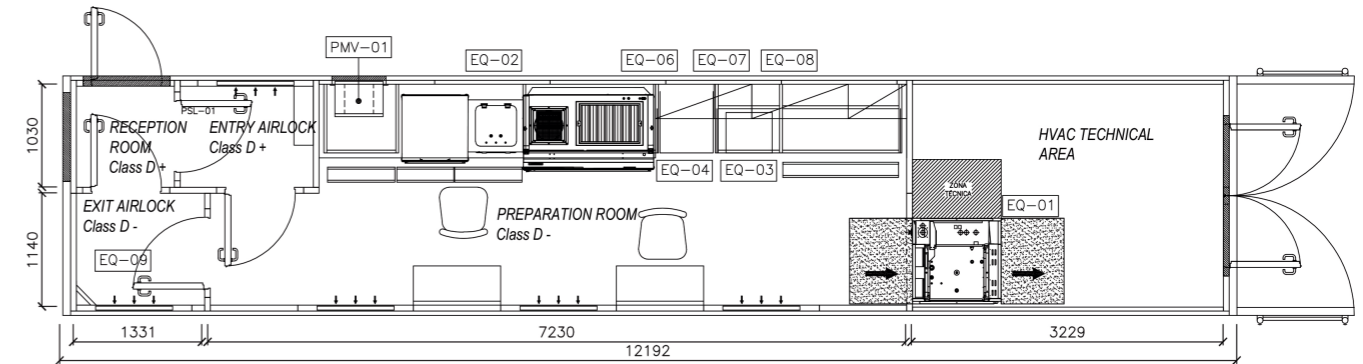
Standard LAB2GO includes:

- Container ISO 40' High Cube;
- Cleanroom architecture according to ISO 14644-4;
- Interlock doors system;
- Customized isolator or Biological Safety Cabinet (BSC)
- Dynamic pass box;
- Cleanroom lightning;
- HVAC system;
- Customized lab furniture;
- Operators training and support. Technical information through audio-visual content accessible at any time;
- Electrical supplies with power stabilizer;
- Testing, accreditation and commissioning;
- Prepared to be connected to other units.

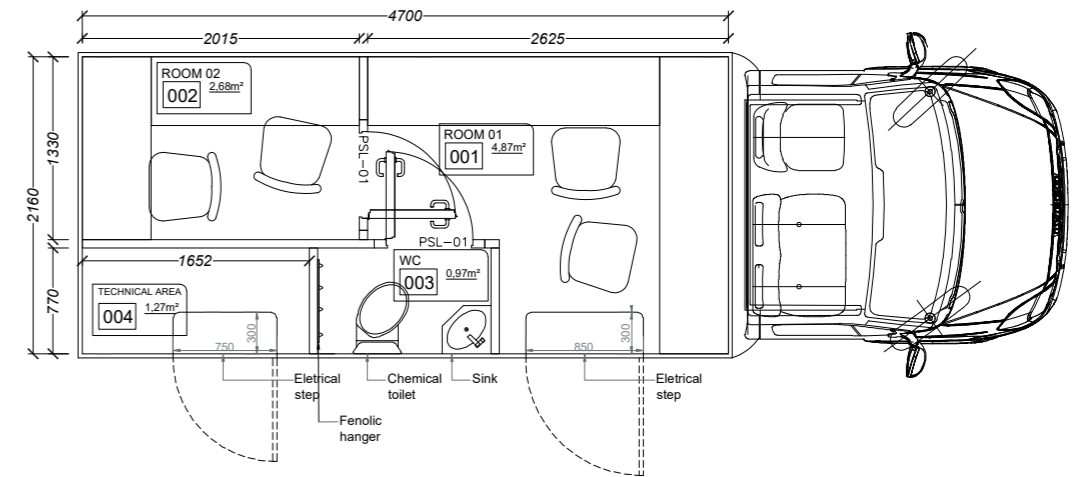
Upon request we can also provide:

- Worldwide preventive maintenance and centralized management system (CTM);
- Centralized or portable decontamination system;
- Decontamination shower;
- Emergency shower and eyewash station;
- Inflatable seals for main doors;
- Compressed air installation
- Supply of laboratory equipment and consumables;
- Analytical and other laboratory equipment;
- Autoclave and other washing system;

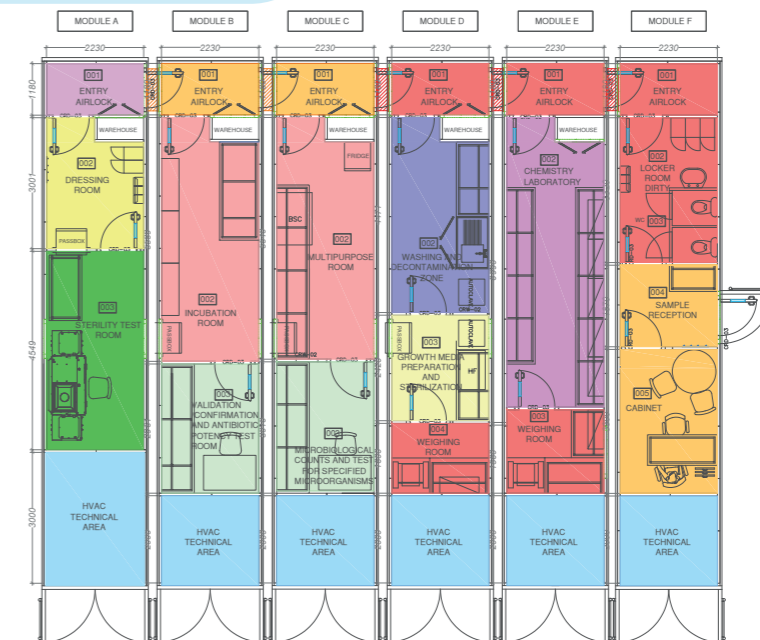
A SINGLE PORTABLE LAB2GO UNIT...



A SINGLE MOBILE LAB2GO UNIT...



...OR AN UPGRADABLE MODULAR CONCEPT



LAB2GO

Brochure



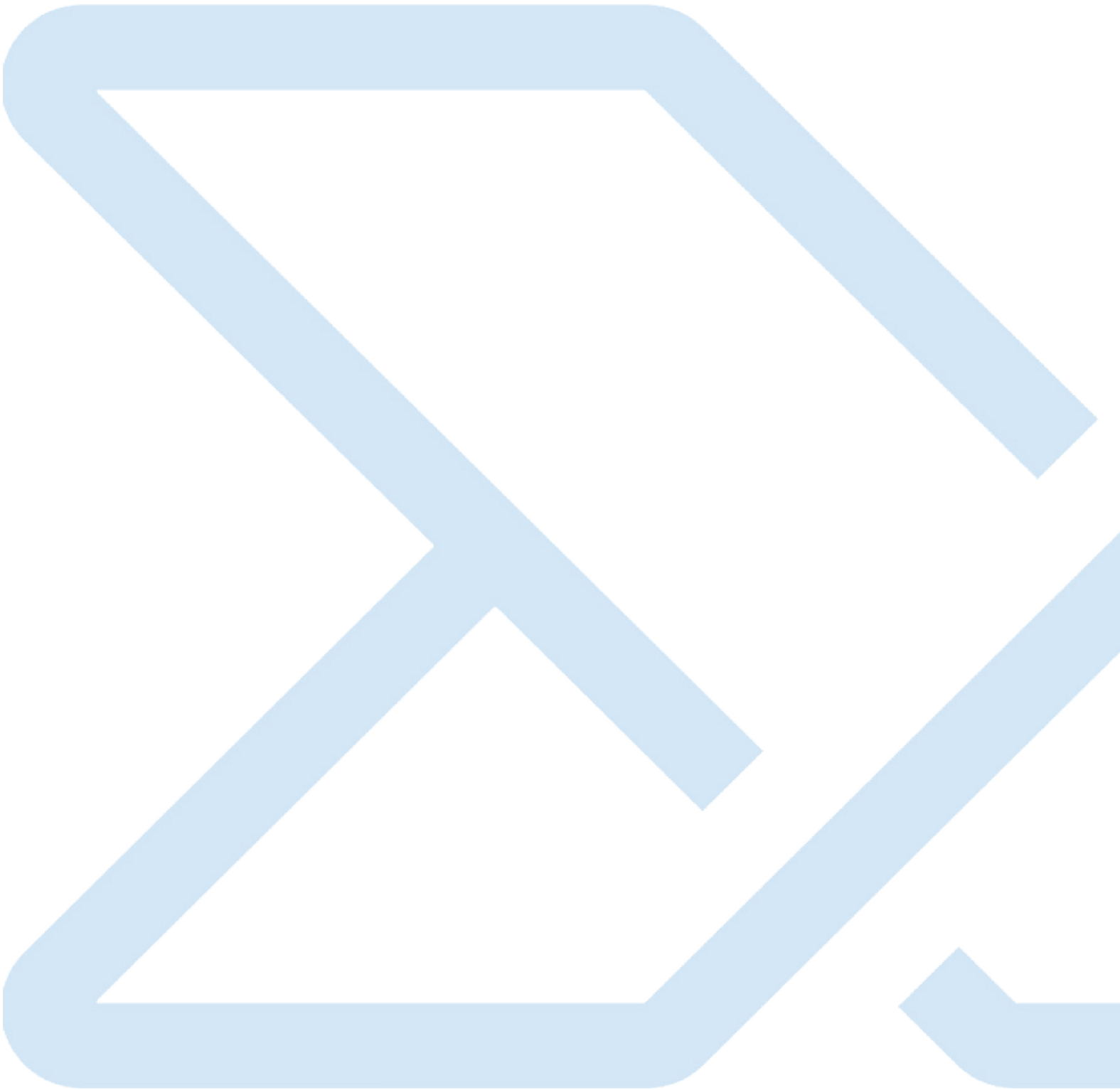
LAB2GO

Landing Page



typeproject

Website



GrupoTypeSolution

